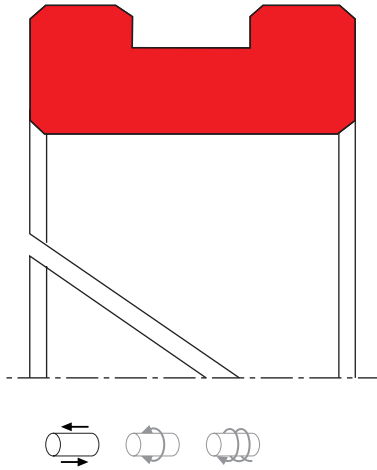


SEAL SPEC F08

seal-mart 



description

with groove on outside diameter, for rod application. split and non split design available. guide ring type F08 is mainly used on piston rods. it provides guiding and bearing surfaces between rod and housing and prevents metal to metal contact between them.

guide ring rings can be used as single rings or multiple rings arranged adjacent to each other. the number of bearing rings depends on the expected side loads. the butt joints in adjacent bearings should be staggered.

due to its excellent dry running properties the guide ring F08 can also be applied behind a rod seal opposite the pressure side.

category of profile

machined only product.

area of application

- use on any piston in hydraulic cylinders.
- standard hydraulic oil, oil-water, water-glycol, synthetic fluids.

operating parameter & material

material	temperature	surface speed max	specific load max
POM	-50 °C ... +100 °C	4,0 m/s	25 N/mm ²
PA	-40 °C ... +100 °C	4,0 m/s	25 N/mm ²
PTFE glass	-200 °C ... +200 °C	4,0 m/s	3 N/mm ²
PTFE bronze	-200 °C ... +200 °C	5,0 m/s	4,5 N/mm ²
TEX	-40 °C ... +130 °C	1,0 m/s	90 N/mm ²

POM up to ø260 mm, PA above ø260 mm

the stated operation conditions represent general indications. it is recommended not to use all maximum values simultaneously. surface speed limits apply only to the presence of adequate lubrication film.

surface quality

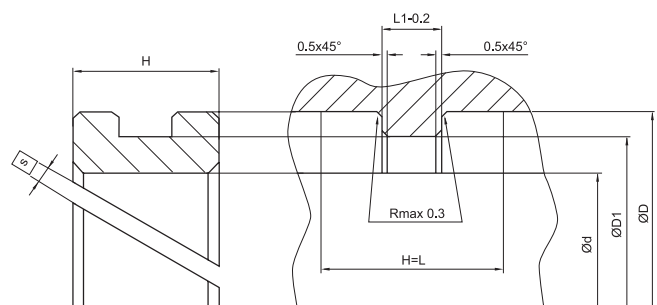
surface roughness	Rtmax (µm)	Ra (µm)
sliding surface	≤1,5	0,1 ... 0,3
bottom of groove	≤6,3	0,8
groove face	≤15	3,2

tolerance recommendation

seal housing tolerance	
Ød	f8
Ød1	H10
ØD	H8

seal & housing recommendations

please note that we are able to produce those profiles to your specific need or any non standard housing. for detail measurements, please see seal-mart catalog...



variations:
- cutting gap width s=...mm
- endless

